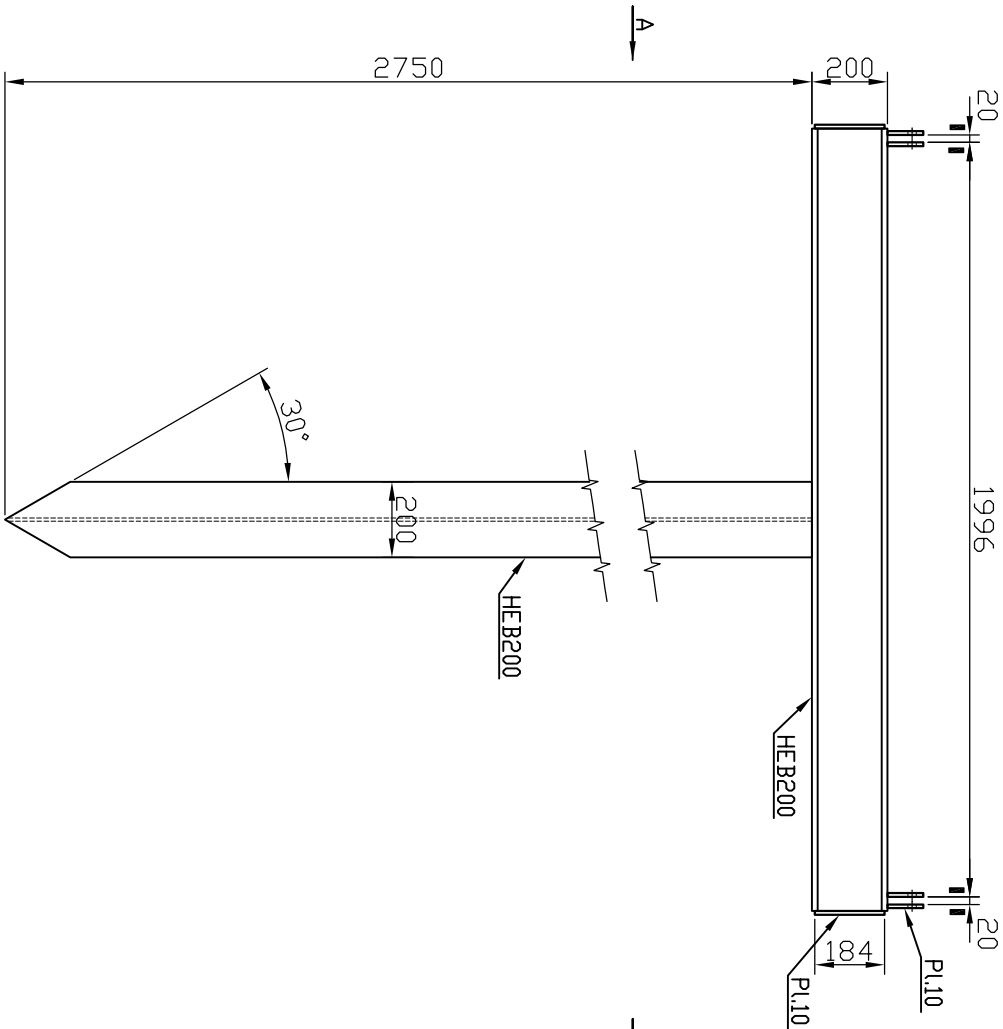
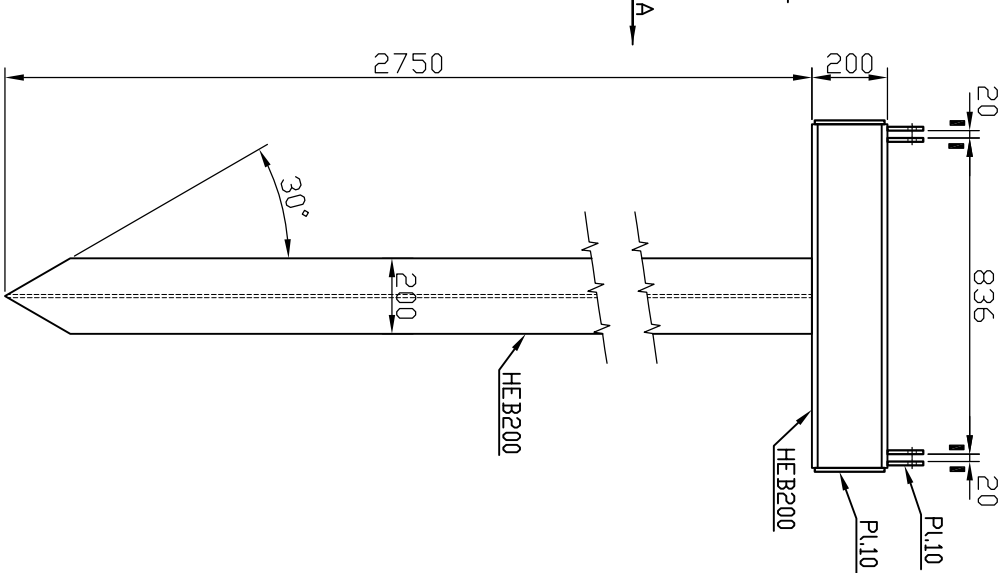


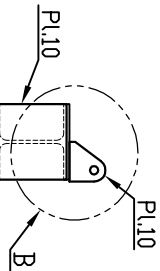
LÁVKA DVOJITÝ MODUL



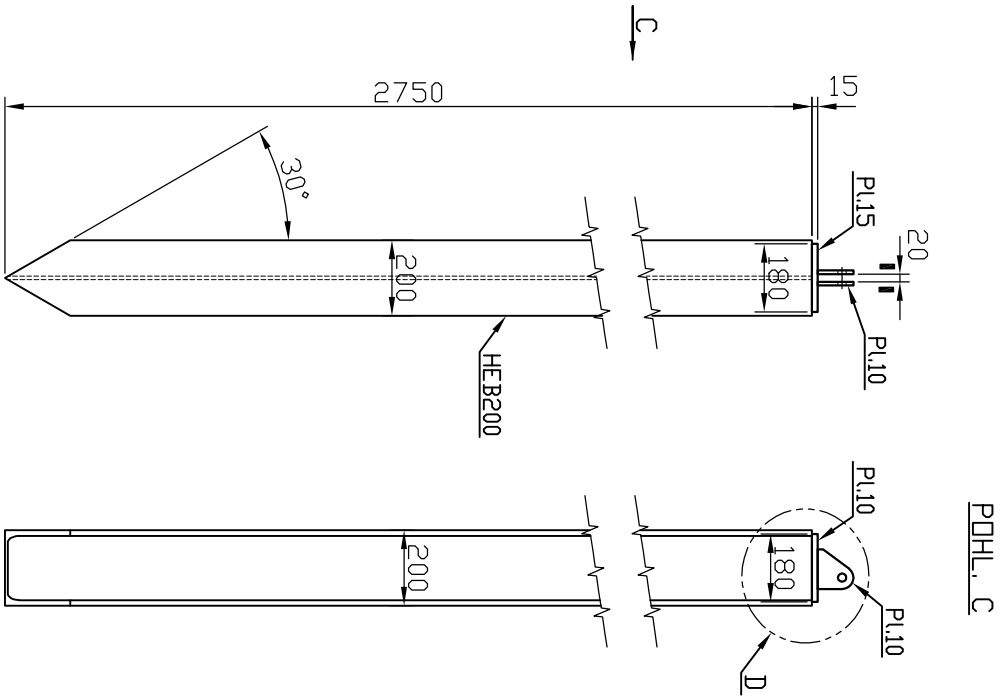
LÁVKA JEDNODUCHÝ MODUL



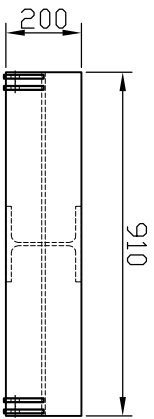
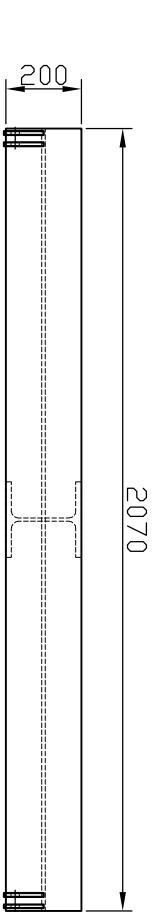
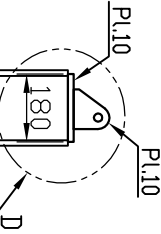
POHL. A



JISTIČÍ LANA

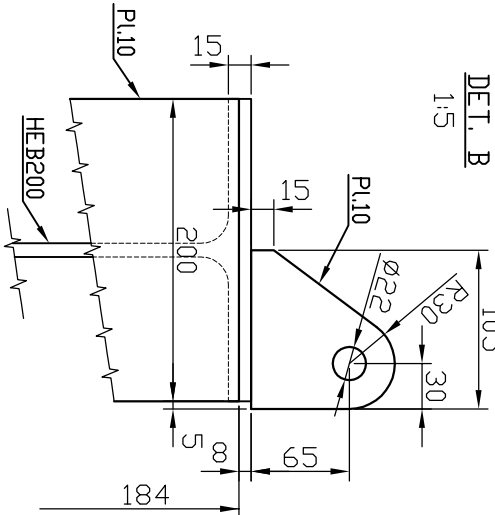


POHL. C

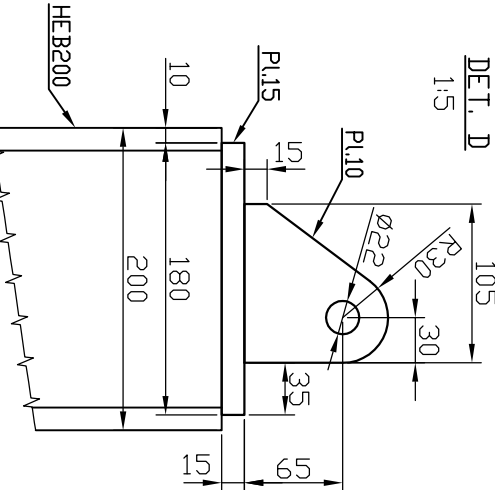



- 1.) Všechny sváry koutové průběžné oboustranné vel. 4.
2.) Po svaření ponorově zinkovat.
3.) Varianta kotvení uchycení lávek k betonovým patkám na č.v. 740-29-02.

DET. B
1:5



DET. D
1:5



						Zpracoval		Generální projektant	
								Ing. arch. Helga Šmídová	
						Velešlav/Nová 16		702 00 Dřstava	
						IČO: 478 39 473			
Změna			Datum			Podpis			